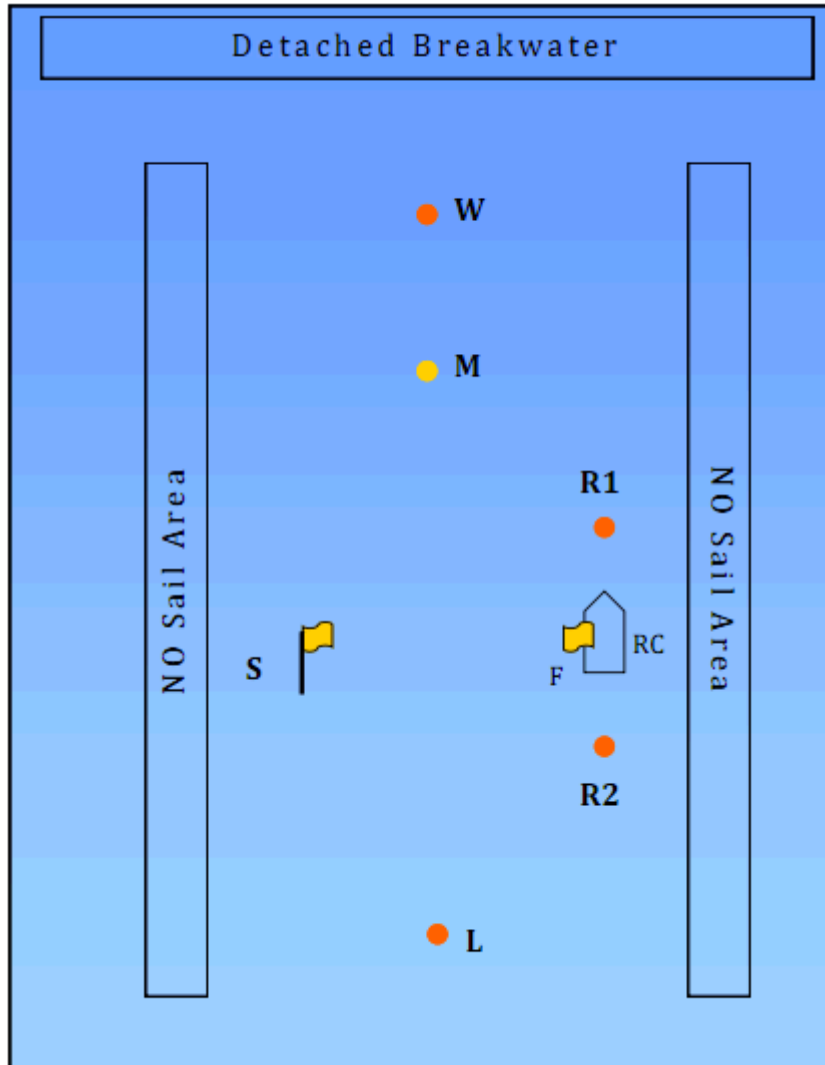


Sponsored By:



2020 Sunstroke Series Course Chart



#	Description	Flags
1	Start > W > Finish	
2*	Start > W > L > Finish	
21*	Start > M > L > Finish	
2D*	Start > L > W > Finish	
3*	Start > W > L > M > Finish	
4*	Start > W > L > M > L > Finish	
5	Start > Ws > R1s > S > L > Finish	
51	Start > Ms > R1s > S > L > Finish	
6	Start > W > S > R2s > L > Finish	
61	Start > M > S > R2s > L > Finish	
7	Start > W > M > W > Finish	
8	Start > W > R1 > W > Finish	
9	Start > W > S > W > Finish	

R1, R2, W, M and L are red balls. S is a orange flag on a staff. All marks are to be left to port unless designated by a lower case "s". F is a orange flag on the committee boat.

*Start line is restricted for course 2, 21, 2D, 3, and 4